

Oxygen Systems Plus - Surgical Suction and Anesthetic Gas Scavenging Set-up

Scavenger System Regenerative Blower



Note: Regenerative blower used in Lab, Medical and Dental facilities for scavenging and aspiration.

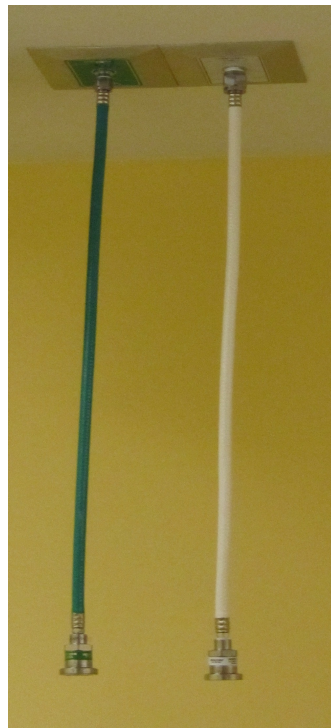
Note: Photo shows oxygen outlet



Ceiling and Wall outlets



Anesthetic Waste Gas Interface
Scavenging and Surgical Suction
Mounted to machine



Medical Ceiling
Outlets O2 / Vac



Ohmeda
Male Q/C



Ohmeda
female Q/C

Note: Scavenging and Surgical Suction can be adjusted at balancing valves on Interface



MAX. PRESSURE – 65"H₂O (60 Hz), 50"H₂O (50 Hz)
MAX. VACUUM – 60"H₂O (60 Hz), 45"H₂O (50Hz)
MAX. AIR FLOW – 127 CFM (60 Hz), 110 CFM (50 Hz)

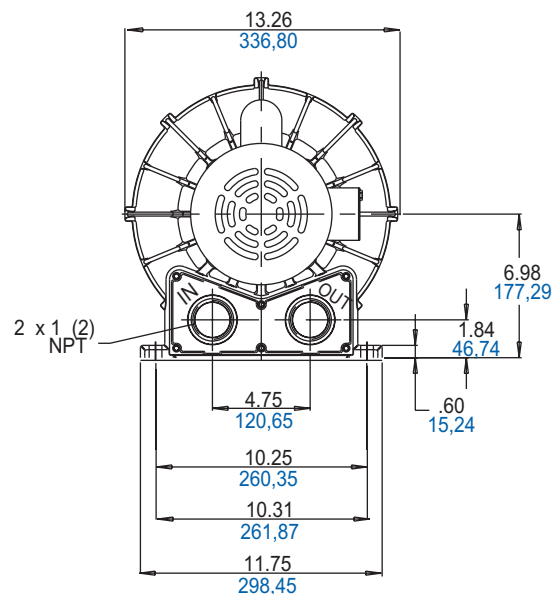
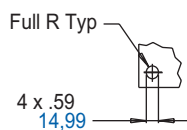
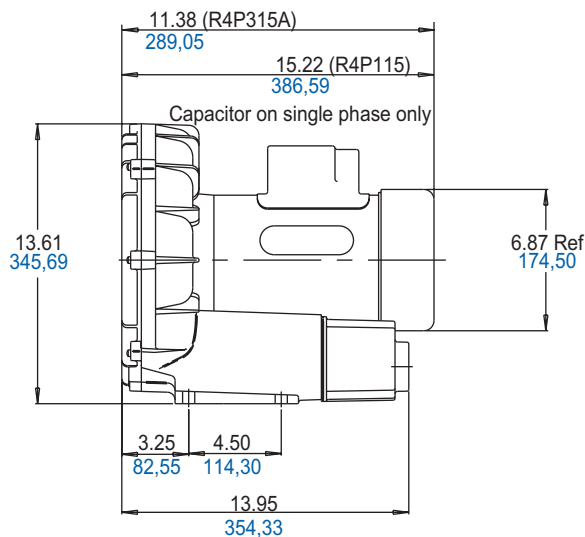
PRODUCT FEATURES

- Rugged construction, low maintenance
- Oilless operation
- UL and CSA approved TEFC motors with permanently sealed ball bearings
- Automatic restart thermal protection on single phase motors
- Aluminum blower housing, impeller and cover
- Can be mounted in any plane
- Inlet and outlet have internal muffling

RECOMMENDED ACCESSORIES

- Pressure gauge AE133
- Inlet filter AJ126D (pressure)
- Vacuum gauge AJ497
- Inline filter AJ151E (vacuum)
- Muffler AJ121D
- Relief valve AG258
- Liquid separator RMS200 (vacuum)

Product Dimensions (in. mm)

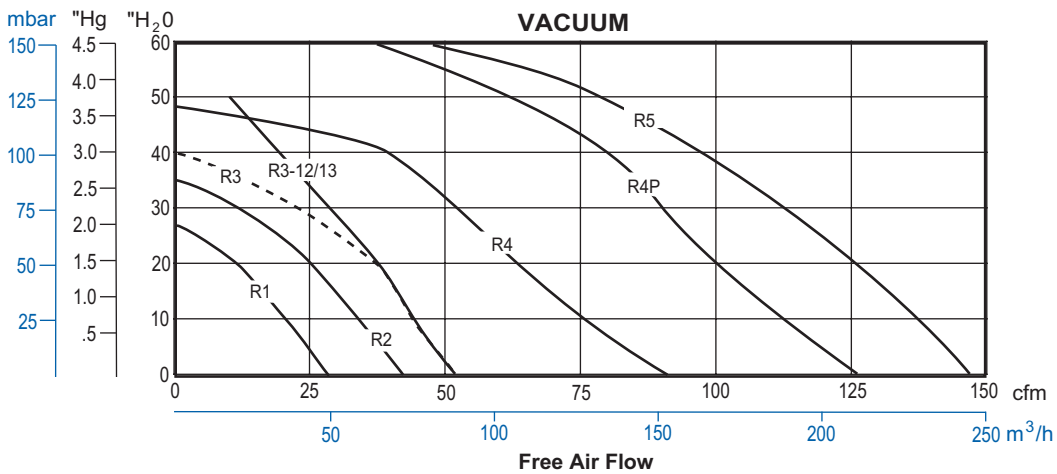
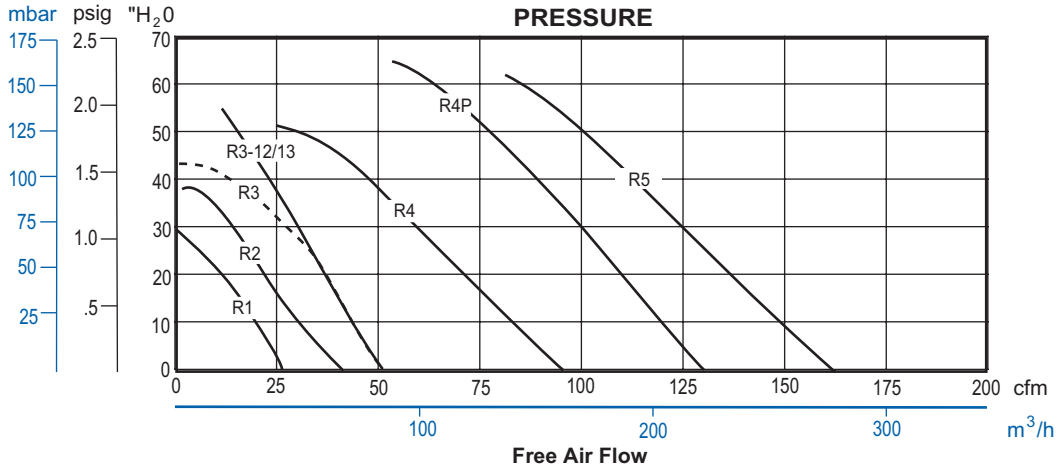




Performance Curves - Low Range for Pressure/Vacuum

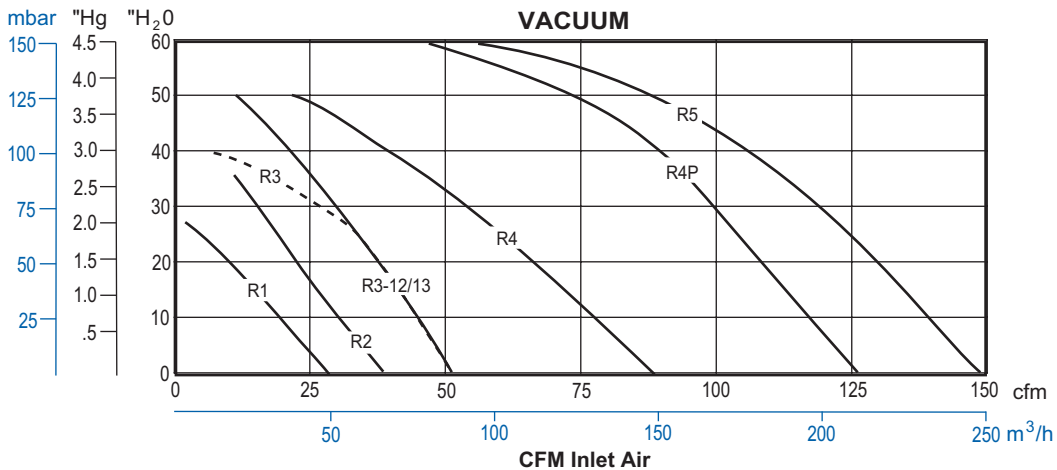
Motor mounted series R1, R2, R3, R4, R4P, R5

Performance at 60 Hz



Gast advertises blower performance in Free Air Flow, or air subjected to only atmospheric pressure. (See above curves)

Some blower manufacturers advertise vacuum performance in CFM Inlet Air - measurement of the suction of air at a specific temperature at the inlet port and a specific discharge pressure at the exhaust port, which can be perceived as enhanced performance over Free Air Flow rated blowers. Therefore, we are also providing the following vacuum performance for Gast blowers in CFM Inlet Air for comparison to other blower manufacturer's advertising.





Product Specifications

		TE FC	TEE
Motor Enclosure		TE FC	TEE
HP/kW	60 Hz	1.5/1.1	1.5/1.1
	50 Hz	1.0/0.75	1.0/0.75
Voltage	60 Hz	115/208-230-1	208-230/460Ø
	50 Hz	110/220-240-1	190-220/380-415Ø
Amps	60 Hz	20.7/11.2-10.4	5.1-4.9/2.5
	50 Hz	16.0/8.0-9.3	3.9-4.3/1.9-2.0
Starting Amps	60 Hz	49 @ 230V	18.5 @ 460V
	50 Hz	72 @ 220V	19 @ 380V
Insulation Class		B	B
Recommended NEMA Starter Size		1/0	00/0

Product Performance

