

specifications

The Motorized Retractable ceiling column shall be an Amico Alert-1 series.

The Motorized ceiling column runs electrically at a voltage of 120 V/60 Hz and at a speed of 0.55 inches [14 mm/s]. This motorized section of the column is activated by a linear drive mounted in the internal shell of the column, with the aid of a wall mounted switch or with a bullnose (head) mounted switch. The column can be lowered or raised to the desired position.

The upper and lower section shrouds are made of 16 gauge 304 stainless steel with a # 4 satin finish and comes complete with:

- Removable access panel
- Stainless steel ceiling collar
- A heavy gauge steel mounting plate, equipped with console gas outlets for all medical gas connections above the ceiling line

All electrical and medical gas services are provided to the face of the lower section by means of flexible hoses and liquid tight flexible metal conduit. All threaded connections comply with NFPA, CGA and DISS recommendations preventing interchanging of connections.

All services are pre-assembled and factory tested. Standard dimensions are 13-9/16" X 13-9/16" [345 X 345 mm] for the upper section and 12" X 12" [305 X 305 mm] for the lower section. Electrical devices are pre-wired, unless otherwise stated.

NOTE: Ceiling height is to be determined by the customer.

The Motorized Column accommodates:

- Up to 12 gas service outlets in any desired sequence
- Electrical outlets can be added on either of the four sides of the column

NOTE: Carbon Dioxide outlets are only available in DISS, Ohmeda and Chemetron. Nitrogen outlets are only available in DISS.

- Any combination of ground jacks, computer outlets, communication devices, slides and I.V. hooks can also be mounted on the side panels.

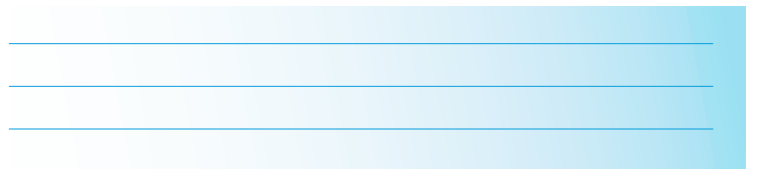
Amico products comply with NFPA-99.



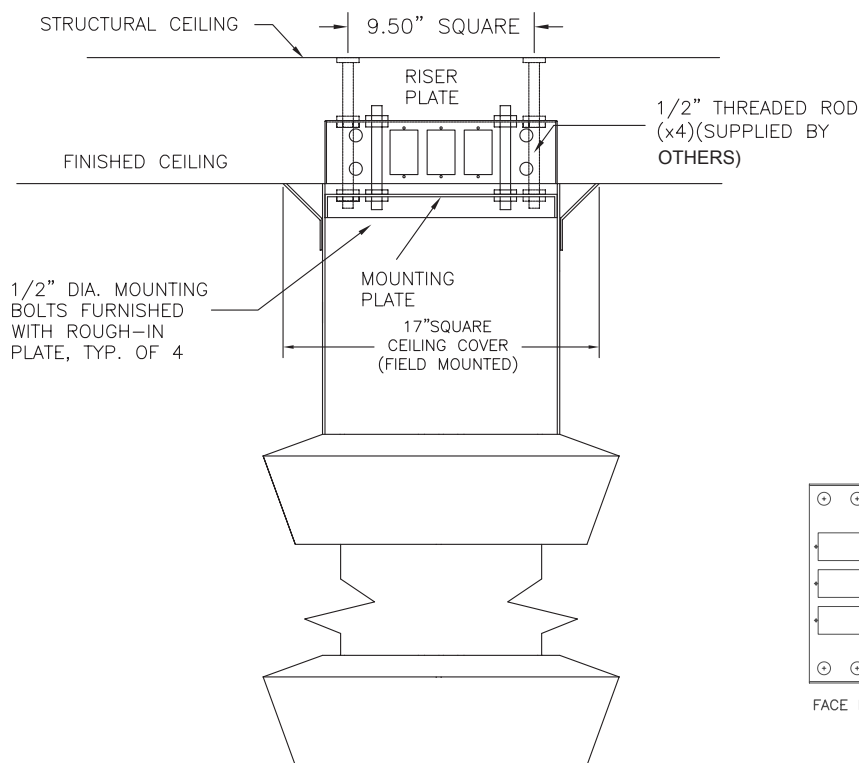
features

- The column is offered with the optional choice of a single Nitrogen Control Panel or a single panel with manifold or a dual Nitrogen Control Panel.
- The Motorized Retractable ceiling column provides a modern efficient method of supplying gas and electrical services in surgery or special care areas.
- For use in anesthetizing locations, the gas outlets are bottom mounted. Units for specialized care areas have side mounted outlets to facilitate the use of secondary equipment.
- When not in use, it can easily be stored away by raising the telescopic section. This will avoid possible accidental contact with medical personnel.
- When required, the face of the column can be lowered to facilitate hook-up of services.

project



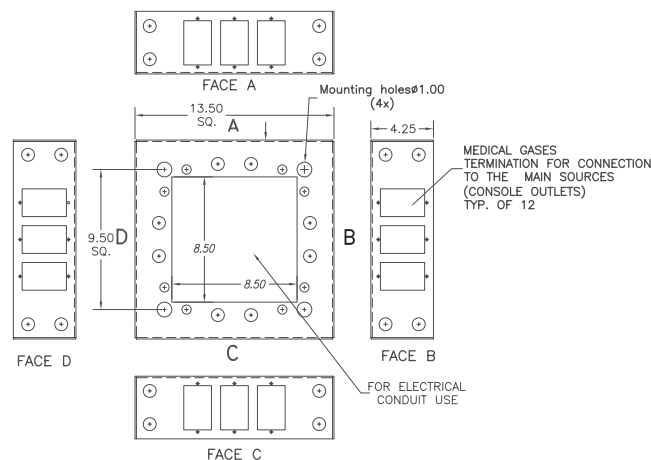
installation



NOTES:

- 1/2" Support rods located for total support of fixture (minimum 400 lb/182 kg load), all labour and materials for support fabrication including nuts and washers for installation supplied by others.
- Installer has final responsibility for the strength and stability of the mounting structure.
- Riser plate to be mounted flush with finished ceiling.
- Mounting structure supplied by others.

Mounting Plate - Top View



C-COL-ELECH-VVV

*Column Height:		Voltage:
30 inches [762mm]	= 30	120V = 120
36 inches [914mm]	= 36	
42 inches [1067mm]	= 42	

NOTE: The motorized retractable ceiling column is available in the height configurations listed above only.

*Available Retractions Only:
 30 inches [762mm] = 10 inches
 36 inches [914mm] = 14 inches
 42 inches [1067mm] = 18 inches

model numbers

Optional Gas Control Panels (to be ordered separately)	
Single Nitrogen Control Panel	C-CONP-S-NIT
Single Gas Control Panel - Medical Air	C-CONP-S-AIR

customer order information

Ceiling columns are custom manufactured to customer specifications. Amico requires a signed, approved copy of all specifications before fabrication can begin. For further information please ask for our Approval Booklet (C-ELEC-ENG).

Oxygen Systems Plus, Inc.
 1-800-480-7664

represented by: